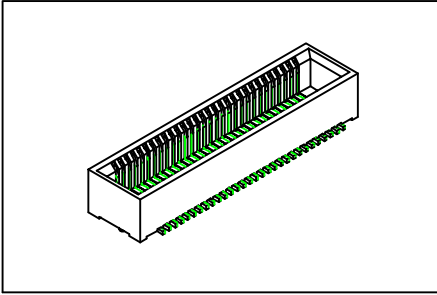


Board To Board 0.5mm(0.02") Female

GXCON



Material:

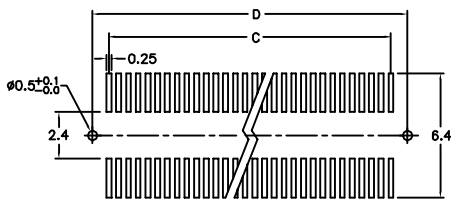
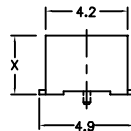
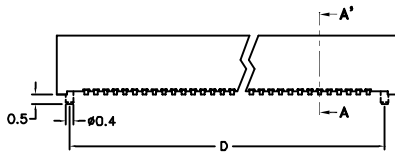
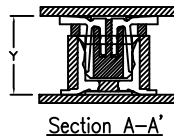
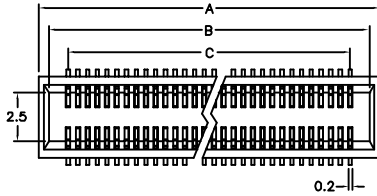
Housing: High Temperature Plastic UL94V-0.
 Contacts: Phosphor Bronze.

Electrical Characteristics:

Current Rating: 0.5 AMP.
 Dielectric Withstanding Voltage: AC 150V For 1 minute.
 Insulator Resistance: 100MΩmin. at DC 500V.
 Contact Resistance: 90mΩmax. at DC 100mA.
 Operating Temperature: -55°C ~ +105°C.

Features:

- * Tube Package
- * Ribbon Mating Type



P.C. Board Layout

Code	1	2	3	4
Height				
X	3.0	3.5	6.0	4.0
Y	4.0	4.5	7.0	5.0
Position	6 Thru 100			
Dimension				
A	0.50 X No. of Positions /2+2.50			
B	0.50 X No. of Positions /2+1.50			
C	0.50 X No. of Positions /2-0.50			
D	0.50 X No. of Positions /2+1.20			

Ordering information

PS51- 100 1 10 3 P I 1
 Series Position 1:Gold Plated Blank: Gold Flash 3:S.M.D Type P: With Post U: Tube Package Code
 10: 10μ" N: Without Post T: Tape & Reel 1: 3.0mm
 15: 15μ" Package 2: 3.5mm
 30: 30μ" 3: 6.0mm
 4: 4.0mm